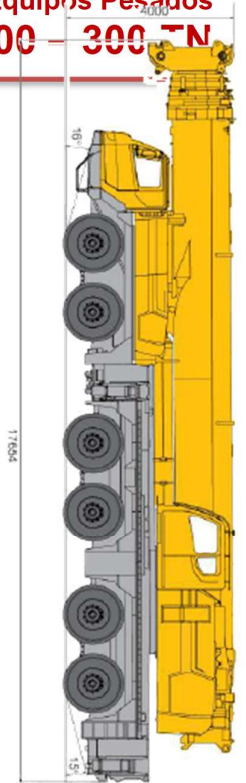
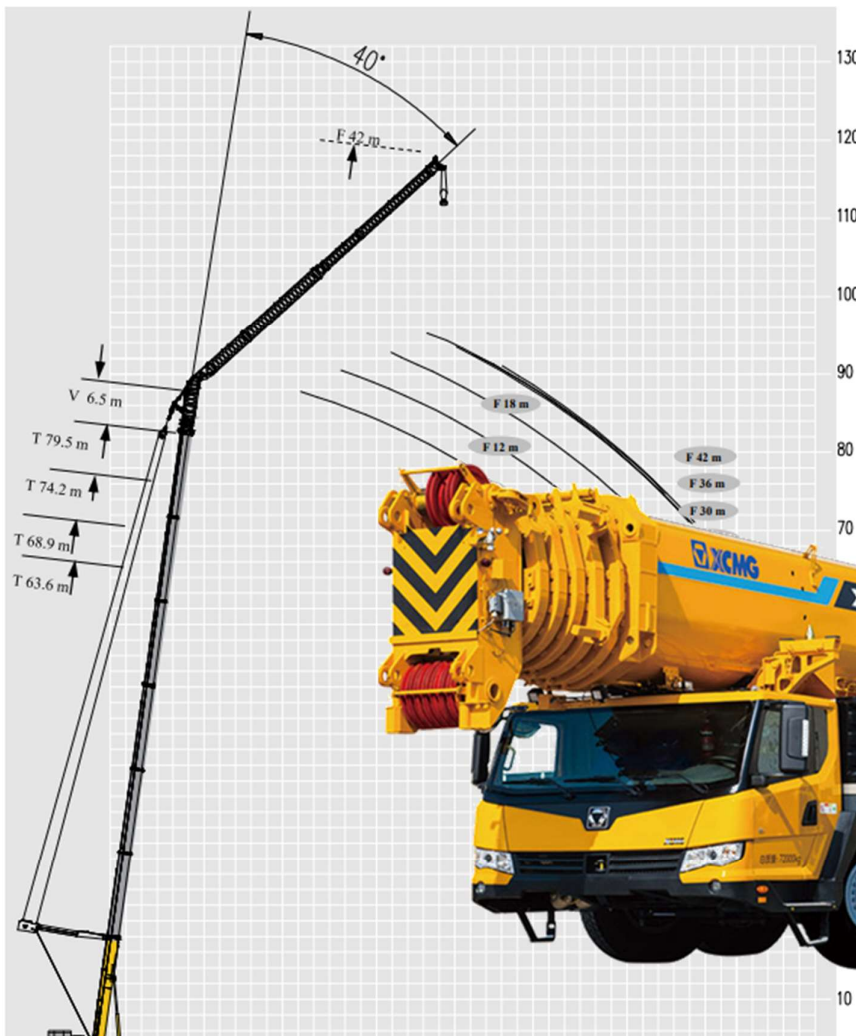


起升高度曲线图
Lifting height chart

主臂+超起+副臂
Boom+ super lifting device + jib



10

起重量表 Rated lifting load tables

主臂起重量表, 平衡重100吨 (表中起重单位t, 臂长、幅度单位m)
Rated lifting load tables for boom – 100t counterweight (Lifting load in t, boom length and radius in m)

工作幅度m Reach (m)	主臂长度(Main length)m									
	15'	16	20	20	25	25	25	29.9	29.9	29.9
3	300	140.0								
3.5	185	140.0	140.0	135.0	140.0					
4	175	140.0	140.0	130.0	135.0					
4.5	161	140.0	140.0	122.0	135.0	135.0	135.0	130.0		
5	148	140.0	130.0	110.0	135.0	125.0	135.0	110.0	110.0	105.8
6	132	136.0	136.0	98.0	125.0	115.0	120.0	120.0	108.0	96.8
7	127	125.0	121.0	85.0	120.0	115.0	118.0	110.0	100.0	90.0
8	117	115.0	110.0	80.0	104.1	103.8	105.1	100.1	96.5	95.9
9	105	103.0	100.0	71.0	95.8	94.0	95.4	91.7	92.4	91.2
10	92	90.0	87.0	65.0	86.2	82.5	85.0	84.0	83.5	82.4
11	82	80.0	77.0	60.0	80.0	77.0	78.0	80.5	77.4	75.8
12	75.5	73.5	70.0	55.0	72.5	68.0	70.5	71.6	70.9	68.8
13		64.5	60.0	50.0	65.2	63.8	64.4	65.2	60.2	59.0
14		57.6	46.5	39.6	57.0	56.0	55.6	56.1	55.8	55.0
15		48.0	41.0	30.0	48.2	46.2	46.2	46.2	47.9	46.9
18					41.0	43.4	44.0	41.9	40.8	42.2
20						34.2	37.4	39.0	36.9	34.0
22							31.6	29.9	32.0	32.0
24								25.6	26.0	27.4
26									23.5	24.2
主臂长度 Main length	000000	000000	001000	000010	000100	110000	011000	001100	111000	210000

主臂长度(Main length)m

工作幅度m Reach (m)	主臂长度(Main length)m														
	59.8				64.8				69.8				74.8		
副臂安装角Jib offset angle [°]	副臂安装角Jib offset angle [°]														
	0	20	40	0	20	40	0	20	40	0	20	40			
16	21.5														
18	20.8			18.5											
20	19.0			17.5			13.0				9.9				
22	18.0			16.0			11.5				8.7				
24	17.0	11.5		16.0			11.0				8.4				
26	16.0	10.5		15.0	10.0		10.9				7.7				
28	15.5	10.5	7.2	14.3	10.0		9.9	7.5			7.4	5.5			
30	14.2	10.0	7.0	13.2	9.6	7.1	9.8	7.0			6.8	4.7			
32	13.9	9.8	7.0	13.0	9.6	7.1	9.0	6.7	5.1		6.8	4.7			
34	13.0	9.6	7.0	12.2	9.0	6.9	8.0	6.4	5.0	6.2	4.3	3.6			
36	12.6	9.6	6.9	11.8	8.7	6.8	8.0	5.7	4.9	6.0	4.2	3.5			
38	12.0	8.9	6.5	10.6	8.5	6.4	7.5	6.7	4.6	5.6	3.8	3.3			
40	11.1	8.7	6.5	10.8	8.2	6.4	7.4	5.3	4.5	5.0	3.7	3.2			
42	10.8	8.4	6.4	10.0	7.6	6.4	6.9	5.3	4.4	4.8	3.7	3.1			
44	9.5	7.9	6.4	10.0	7.6	6.4	6.6	5.0	4.2	4.7	3.5	3.0			
46	8.1	7.9	6.3	8.7	7.2	6.0	6.4	5.0	4.1	4.6	3.4	2.8			
48	6.8	7.5	6.3	7.4	7.2	6.0	5.9	4.7	4.0	4.0	3.2	2.7			
50	5.5	7.3	6.3	6.2	6.8	6.0	5.9	4.7	3.5	4.0	3.1	2.9			
52	4.5	6.1	6.0	5.1	6.6	6.0	5.2	4.4	3.5	3.7	3.0	2.3			
54	3.5	4.9	4.5	4.1	5.6	4.5	4.9	4.3	3.5	3.5	2.7	2.1			
56	2.6	3.9	4.0	3.2	4.5	4.0	3.9	4.1	3.2	3.5	2.6	2.1			
58		2.9	3.0	2.4	3.6	3.8	3.1	4.0	3.2	3.3	2.3	2.1			
60															
62							2.3	3.5	3.2	3.2	2.2	2.0			
64								2.6		2.4	2.1	2.0			
66											3.0	2.0			
主臂长度 Main length	222111			222211			222221				222222				